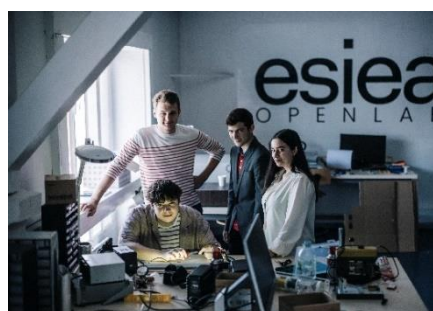


|                     |  |
|---------------------|--|
| Name of institution | ESIEA Graduate School of Engineering                 |
| Erasmus code        | F PARIS294   |
| Managing Director   | Mr Loïc ROUSSEL                                      |
| Website             | <a href="#">ESIEA - Erasmus + Exchange Program</a>   |
| Student Handbook    | <a href="#">ESIEA International Student Handbook</a> |



### SEMESTER DATES

3rd year program (Bachelor 3 level) = Semesters 5 and 6

**Semester 5: end of August – end of January**

**Semester 6: end of January – mid June**

4th year program (M1 level) = Semesters 7 and 8

**Semester 7: end of August – end of December**

**Semester 8: early January – end of March**

### APPLICATION PROCEDURE

#### 1. Nomination

All exchange students have to be nominated by the international advisor of the partner university. Nominations should be sent by e-mail to Mrs Susan LOUBET : [susan.loubet@esiea.fr](mailto:susan.loubet@esiea.fr)

#### 2. Application documents to upload on the ESIEA Mobility Online platform

- ✓ ID photo in either JPG or PNG format
- ✓ Photocopy of passport or ID card
- ✓ Study transcripts in English
- ✓ Curriculum vitae
- ✓ Proof of language level (B2 required in French or English depending of your programme)

### DEADLINES

|  | <i>Nomination</i> | <i>Submit application documents</i> |
|--|-------------------|-------------------------------------|
| <i>Semesters 5 and 7 (September – December or January) or entire academic year</i> | <i>01 May</i>     | <i>15 May</i>                       |
| <i>Semesters 6 and 8 (January – April or June)</i>                                 | <i>01 October</i> | <i>15 October</i>                   |

## ACCOMMODATION

ESIEA cooperates with the **CROUS** student halls of residence (a public organization), and has reserved a limited quota of furnished CROUS rooms.

**Please note:** The available rooms are on a first-come, first-served basis, in the order the applications arrive. Due to the limited number of exchange student rooms, please note that applying before the deadline does not guarantee housing at **CROUS**.

### Paris – Ivry-sur-Seine

#### Two possibilities:

1. The residence hall **CROUS Cachan** is located at about 45 minutes by bus from ESIEA Paris- Ivry Campus.  
2 types of rooms:
  - 10 m<sup>2</sup>, with private toilet and shower. No cooking facilities inside this small room. Rent 280 €
  - 18 m<sup>2</sup>, with private small kitchen, toilet, and shower. Rent between 400-460 € per month.
 Bedding is not provided.
2. The residence hall **CROUS Kremlin-Bicêtre** is located at about 20 minutes by metro from ESIEA Paris- Ivry Campus. Rooms are 18-20 m<sup>2</sup>, with private small kitchen, toilet and shower. Rent between 400-455 € per month.  
Bedding is not provided.



For **Private housing In Paris**, please check here:

Next door to ESIEA : [résidence étudiante Studéa](#)

About 5 minute walk from ESIEA : [Estudines Paris Porte d'Ivry](#)

Furnished studios with private bathroom and fully equipped kitchen. Bedding is provided.

### Laval

The residence hall **CROUS** is located on the campus and offers comfortable studio flats with private toilet/shower facilities and your own kitchenette. Rent is 347 € per month. Electricity (heating) is not included. This runs between 30 € and 60 € per month.



|                 |   |
|-----------------|---|
| Insurance       | <p>All students must show proof of French housing insurance upon arrival to cover accidental damage caused by the tenant or by natural disasters: flooding, storm etc...</p> <p>They also have to take out civil liability insurance which covers them in case of damage to a third person. This is generally included in the housing insurance, but this needs to be verified.</p> <p>To take out a housing insurance policy, you can use any online provider, but you must use a French insurance company. Hereunder you will find two options :</p> <p><a href="#">HEYME</a><br/><a href="#">ADH Assurance</a></p> <p>The students will need to pay for 1 year of insurance (regardless of the length of stay)</p> <p><b>Important :</b></p> <ul style="list-style-type: none"> <li>• You should make sure that you have the civil liability coverage</li> <li>• We highly recommend you to open a bank account in France</li> </ul> |
| Cost of housing | <p><b>In Paris</b></p> <p><b>CROUS Cachan</b><br/>Between 280 and 460 €/ month for a room, utilities included.<br/>233 € deposit</p> <p><b>CROUS Kremlin-Bicêtre</b><br/>400 - 455 €/ month for a room, utilities included.<br/>233 € deposit</p> <p><b>Private housing In Paris</b><br/>The rent per month is between €700 and €900.</p> <p><b>In Laval:</b></p> <p>1 year lease – <b>CROUS</b> studio apartment<br/>347 €/ month + utilities<br/>~ 100 € deposit</p> <p>Semester lease – private studio apartment housing solution<br/>~ 400 - 500 €/ month<br/>~ 200 € deposit</p>   |

**CONTACT PERSONS**  
**International Office**



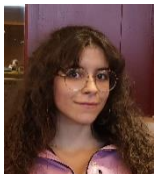
Susan LOUBET  
Director of International Relations  
Tel. : + 33 2 43 59 46 11  
Mail : [susan.loubet@esiea.fr](mailto:susan.loubet@esiea.fr)



Gloria FUERTES  
International Coordinator  
Tel. : + 33 1 43 90 21 36  
Mail : [gloria.fuertes@esiea.fr](mailto:gloria.fuertes@esiea.fr)



Suzanne VILCHEZ  
International Coordinator  
Tel. : + 33 1 43 90 21 64  
Mail : [suzanne.vilchez@esiea.fr](mailto:suzanne.vilchez@esiea.fr)



Clara SALDARRIAGA  
International Relations Assistant  
Tel. : + 33 1 82 39 25 06  
Mail : [clara.saldarriaga@esiea.fr](mailto:clara.saldarriaga@esiea.fr)

**ESIEA Laval, 38 rue des Docteurs Calmette et Guérin – 53000 Laval - FRANCE**  
**ESIEA Paris-Ivry, 74 bis avenue Maurice Thorez - 92400 Ivry-sur-Seine - FRANCE**